



Sourcefire IPSx™ —IPS Made Simple



- ✓ **Simple set-up, administration, and compliance**
- ✓ **Effective security**
- ✓ **Attractive cost of ownership**

Are compliance regulations dictating your priorities and spend? Does your company have a dedicated security team? Or has security become the responsibility of network administrators? Do you need an affordable, easy-to-use security solution that protects the network from the ongoing barrage of threats?

Sampling of Threat Protection Provided by Sourcefire IPSx

- DoS attacks
- Buffer overflows
- P2P attacks
- Worms
- Trojans
- Backdoor attacks
- Spyware
- Invalid headers
- Blended threats
- Rate-based attacks
- Zero-day threats
- Port scans
- VoIP attacks
- IPv6 attacks
- Statistical anomalies
- Protocol anomalies
- Application anomalies
- Malformed traffic
- TCP segmentation and IP fragmentation

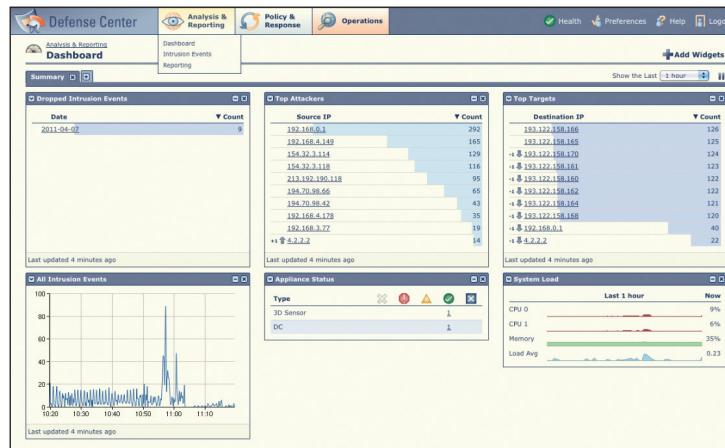
INTRODUCING SOURCEFIRE IPSx:

Sourcefire IPSx is an intrusion prevention system tailor-made for administrators to secure networks and meet compliance mandates with minimal administrative attention. IPSx underscores its simplicity with the industry's best detection offered at an attractive price point. The IPSx system consists of sensors and a management appliance:

- » Sourcefire IPSx Sensors (IPSx250, IPSx500, and IPSx1000): Available in 250Mbps, 500Mbps, and 1Gbps models, each has eight copper interfaces so you can deploy IPSx to protect multiple network segments.
- » Sourcefire Defense Center® (DC750x): Management through the DC750x provides a streamlined administrative experience and provides preconfigured and customized reporting capabilities.

SIMPLE SETUP, ADMINISTRATION, AND COMPLIANCE

Setup: Sourcefire IPSx makes implementing and managing an IPS simple through its centralized management and intuitive GUI. Installation of the system takes just minutes.



You can select basic network settings, define the networks you want to protect, and choose whether the appliance actively blocks attacks or passively alerts administrators. You can also select a default security policy created and maintained by the Sourcefire Vulnerability Research team™ (VRT) to keep pace with emerging threats. The system receives updates automatically so your protection is always current.

Administration: Users can easily administer the system by leveraging the following ways to view information:

- High-level dashboard: Select a default dashboard or build a custom view by selecting from an extensive library of drag-and-drop widgets to display important information.
- Security events details: Drill down to get a clear picture of a security event, including detailed documentation of the attack scenario, corrective action, affected systems, as well as comprehensive event and packet information.



- Reporting: Easily create reports with summary data, trending information, breakdown by protocol and attack type, and much more.

Compliance: Compliance regulations for network security are becoming more specific, and some explicitly require organizations to deploy IPS. IPSx helps achieve compliance requirements, including:

- PCI DSS: Payment Card Industry Data Security Standard
- SOX: Sarbanes-Oxley
- HIPAA: Health Insurance Portability and Accountability Act
- GLBA: Gramm-Leach Bliley Act

EFFECTIVE SECURITY

The simplicity of IPSx is underscored by incredibly effective security. IPSx features the same industry-leading inspection engine and rule set as other Sourcefire® solutions. Industry distinctions include:

- Best detection in the Network IPS Comparative Group Test conducted by NSS Labs
- Leader in the Gartner Magic Quadrant for Network IPS Appliances
- Best IDS/IPS from *SC Magazine*
- ICSA Labs Certified

By selecting IPSx from Sourcefire, you can rest easy knowing that you haven't sacrificed security for simplicity.

ATTRACTIVE COST OF OWNERSHIP

IPSx not only will save you time and money in the long run, but it's also offered at an attractive price point. To learn more, visit us at www.sourcefire.com, or contact Sourcefire or a member of the Sourcefire Global Security Alliance today.

SOURCEFIRE IPSx PRODUCT SPECIFICATIONS

Model	DC750x	IPSx250	IPSx500	IPSx1000
Performance and Functionality				
Appliance Type	Management	Sensor	Sensor	Sensor
Supported Line Speed (IPS)	-	250Mbps	500Mbps	1Gbps
Monitoring Interfaces	-	(8) Copper RG45 10/100/1000	(8) Copper RG45 10/100/1000	(8) Copper RG45 10/100/1000
Integrated Fail-Open Interfaces	-	Yes	Yes	Yes
Management Interface	RJ45	RJ45	RJ45	RJ45
Management Interface Speed	10/100/1000	10/100/1000	10/100/1000	10/100/1000
Typical Latency	-	< 1 millisecond	< 1 millisecond	< 1 millisecond
Maximum IPS Event Storage	20 Million	-	-	-
Maximum IPS Event Rate (per second)	2000	-	-	-
Maximum IPSx Sensors Managed	10*	n/a	n/a	n/a
Memory (RAM)	2GB	4GB	4GB	4GB
Disk Capacity	500GB	160GB	160GB	160GB
Lights Out Management	No	No	No	No
Dual Power Supplies	No	Yes	Yes	Yes
Physical and Environmental				
Form Factor	1U	1U	1U	1U
Dimensions (D x W x H in inches)	27.19 x 16.9 x 1.7	20 x 16.93 x 1.7	20 x 16.93 x 1.7	20 x 16.93 x 1.7
Shipping Weight (lbs)	33lbs	39lbs	39lbs	39lbs
Power Supply	9.5 Amp max at 110V AC 4.75 Amp max at 220V AC	6.3 Amp at 110V AC 3.2 Amp at 220V AC	6.3 Amp at 110V AC 3.2 Amp at 220V AC	6.3 Amp at 110V AC 3.2 Amp at 220V AC
BTU rating (per hour)	1660	1200	1200	1200
Operating Temperature	10°C - 35°C (50°F to 95°F)	10°C - 35°C (50°F to 95°F)	10°C - 35°C (50°F to 95°F)	10°C - 35°C (50°F to 95°F)
RoHS	Yes	Yes	Yes	Yes

*DC750x can only manage Sourcefire IPSx Sensors.

©2011 Sourcefire, Inc. All rights reserved. SOURCEFIRE®, Sourcefire IPS™, Snort®, RAZORBACK®, the Sourcefire logo, the Snort and Pig logo, SECURITY FOR THE REAL WORLD™, SOURCEFIRE DEFENSE CENTER®, SOURCEFIRE 3D®, RNA®, RUA®, DAEMONLOGGER™, CLAMAV®, IMMUNET™, COLLECTIVE IMMUNITY™ and certain other trademarks and logos are trademarks or registered trademarks of Sourcefire, Inc. in the United States and other countries. Other company, product and service names may be trademarks or service marks of others.