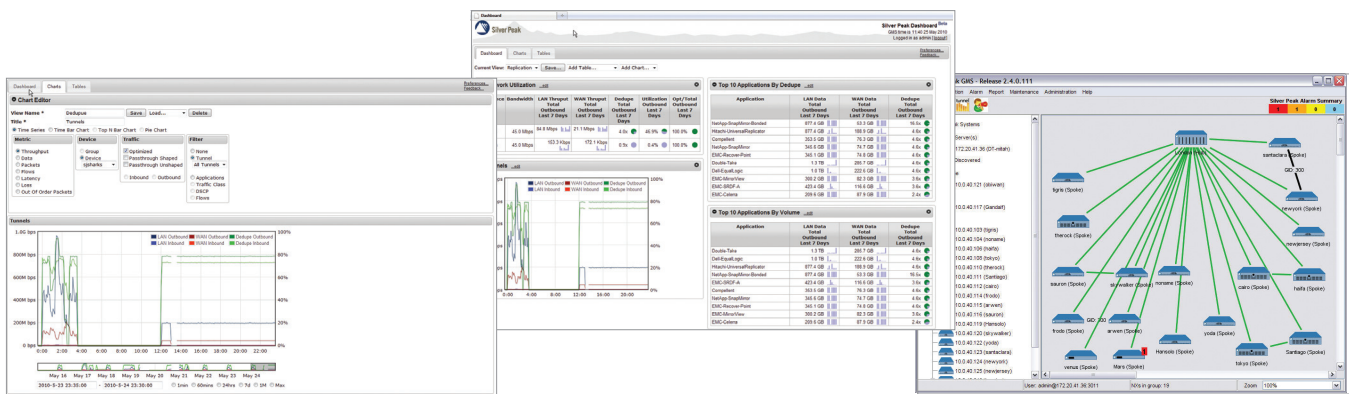


SILVER PEAK GLOBAL MANAGEMENT SYSTEM (GMS)



CENTRALLY MANAGE YOUR OPTIMIZED WAN

The Silver Peak Global Management System (GMS) is a powerful platform for the deployment, management, and monitoring of a Silver Peak-enabled Wide Area Network (WAN). In addition to centralizing the administration of Silver Peak NX and VX appliances, GMS provides detailed visibility into all aspects of application delivery across a distributed enterprise, including application behavior, WAN performance (latency/loss), Quality of Service (QoS) policies, and bandwidth utilization.

GMS is an essential component of Silver Peak's WAN optimization solution, which is designed to eliminate server sprawl by enabling enterprises to centralize branch office infrastructure without compromising application performance. With Silver Peak, IT managers have all the tools necessary to centrally deliver business critical applications in a secure, reliable, and cost effective manner.

EASE OF DEPLOYMENT

GMS comes as a standalone network appliance or as a virtual appliance that runs on industry standard servers.

GMS ensures fast and accurate configuration of Silver Peak NX, VX and VRX appliances. New appliances can automatically register with the GMS via a zero-touch provisioning technology, allowing customers the ability to deploy appliances with minimal onsite IT expertise. In addition, Silver Peak provides an automated deployment wizard to assist with the configuration of these devices, and graphical tools can be used to easily configure large networks in a point-and-click fashion. Enterprise-wide policies (for example, bandwidth contracts) can be created and applied using customized templates within GMS, ensuring consistent configuration across numerous Silver Peak appliances, regardless of location.

SIMPLIFIED DEVICE MANAGEMENT

GMS facilitates day-to-day administrative tasks across an entire distributed network of Silver Peak appliances (or group of appliances). This includes scheduled configuration backups, automatic software updates, and other vital device management functions. In addition, GMS can be used to drill down into individual appliances for specific configuration, monitoring, and management tasks.

CENTRALIZED NETWORK MONITORING

GMS provides a single, centralized “launch point” for monitoring a Silver Peak–enabled WAN. This includes easy to use dashboards that provide essential real-time information, such as device status and usage statistics, tunnel metrics, and alarms. Automatic email notifications ensure that IT staff are always in the loop – facilitating day-to-day performance monitoring and ensuring that faults are always isolated and resolved in a timely and cost effective manner.

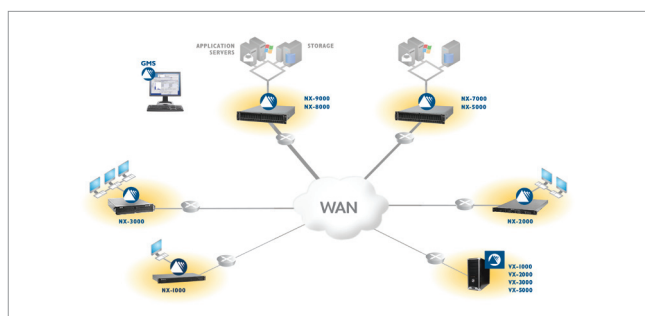
EXTENSIVE REPORTING CAPABILITIES

GMS provides extensive reporting capabilities that assist with capacity management, network planning, auditing, troubleshooting, ROI analysis, and SLA enforcement. Historical reports can be generated in real-time or scheduled as part of regular management operations. This includes traffic statistics (data reduction, TCP flow counts, latency/loss characteristics, bandwidth allocation), application behavior (top ten applications, bandwidth allocation per application), and alarms. This information can be exported from GMS for easy manipulation and long-term storage.

FLEXIBLE AND SECURE ACCESS

GMS offers different levels of user access that provide varying degrees of read and write privileges. Support for TACACS+ and RADIUS ensures easy integration with existing authentication systems.

A web interface (using HTTPS) ensures seamless and secure access to the GMS platform from virtually any location.



GMS Specifications

HARDWARE / SOFTWARE REQUIREMENTS

Physical Appliance: 2-RU appliance

Virtual Appliance: Requires VMware ESX or ESXi (4.0 or later) running on standard server with two 64-bit x86 CPUs (minimum 2.3 GHz), 4 GB RAM, 100 GB contiguous disk space, 2x1 Gbps NICs

VARIANTS INCLUDE

GMS - 10	Supports up to 10 NX, VX and VRX appliances
GMS - 25	Supports up to 25 NX, VX and VRX appliances
GMS - 50	Supports up to 50 NX, VX and VRX appliances
GMS - 100	Supports up to 100 NX, VX and VRX appliances
GMS - 200	Supports up to 200 NX, VX and VRX appliances
GMS - 500	Supports up to 500 NX, VX and VRX appliances
GMS - 1000	Supports up to 1,000 NX, VX and VRX appliances
GMS - 2000	Supports up to 2,000 NX, VX and VRX appliances

MANAGED DEVICES

All NX, VX and VRX appliances

CLIENT REQUIREMENTS

Windows 7, Windows Vista, or Windows XP with Microsoft Internet Explorer version 7.0 or higher; Apple Mac OS X 10.5.1 or higher

FEATURES

BENEFIT

Standalone appliance or virtual appliance that runs on standard servers	Easy setup and maintenance
Zero-touch configuration of new appliances	Plug-and-play registration and setup
<ul style="list-style-type: none"> Automated setup wizard Point-and-click configuration 	Simplified device configuration for rapid deployment
Policy-based templates	Establish consistent policies across multiple appliances and locations; Avoid configuration errors
Schedule administrative tasks (backup, software updates, ...)	Ensure that routine tasks are performed consistently and reliably
Real-time dashboards	Quick analysis of vital statistics for performance monitoring and troubleshooting
Historical reporting (on demand and scheduled)	Assist with capacity management, planning, auditing, troubleshooting, ROI, and SLA enforcement
Administrator; read, and read/write access levels	Granular access to key management functions
RADIUS and TACACS+ support	Integrate with existing authentication schemes
HTTPS interface	Secure access — anytime / anywhere